

# MobileDemand Technical Support Bulletin

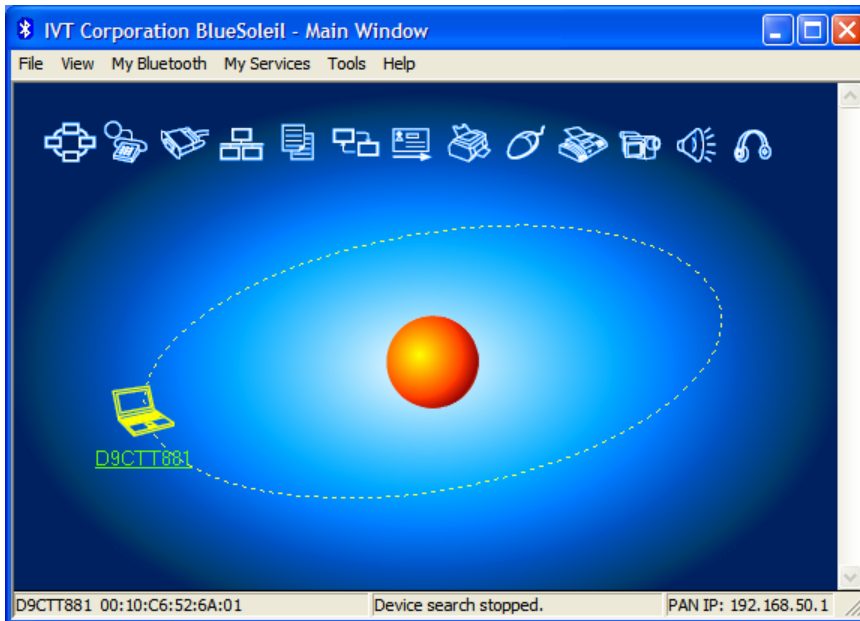
Bulletin #: 20070119

Subject: T8600 Bluetooth Basics

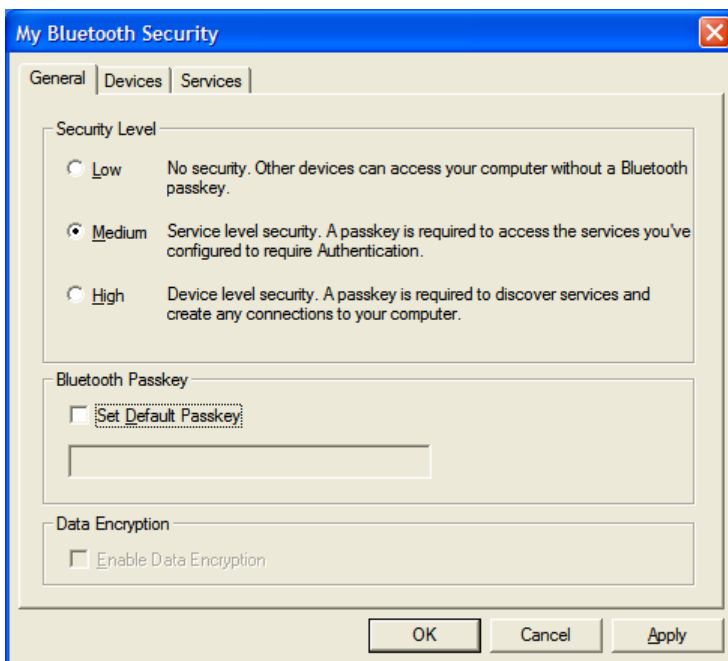


The following are basic instructions about how to use BlueSoleil on an xTablet T8600:

- 1) Open BlueSoleil from the desktop shortcut or via **Start – Programs – IVT BlueSoleil - BlueSoleil**



- 2) **My Bluetooth – Security – General**, in the Bluetooth Passkey section uncheck **Set Default Passkey** -OK

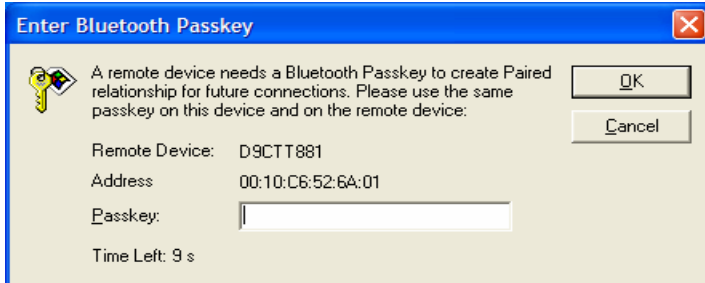


3) **My Bluetooth – Bluetooth Device Discovery**

4) Right Click on the **Device** (printer, scanner est.) that you want to communicate with – **Pair Device**

To perform a right click, follow these instructions:

- In digitizer mode, press the button on the stylus while clicking the **My Computer** icon.
- In touch screen mode, press and hold the **My Computer** icon for a few seconds. (hold very still)
- Note: Pressing Fn+0 switches between digitizer and touch screen mode.



5) Enter the passkey for the device you are communicating with - **OK**

Note: Contact the devices manufacturer for its default passkey. This passkey can be changed on most devices with configuration software from the manufacturer.

6) Right click on the **Device** again – **Connect – Bluetooth Serial Port**

7) BlueSoleil will connect and then tell you which COM port it is using. For example: if your device is a printer that uses a Generic\Text printer then change the COM port setting within that printer to the COM port that is assigned. Reference T8600 Printer Basics document for detail on changing printer COM port settings.

If there are any questions, please call MobileDemand at 319-363-4121, or e-mail [support@mobiledemand.com](mailto:support@mobiledemand.com).